

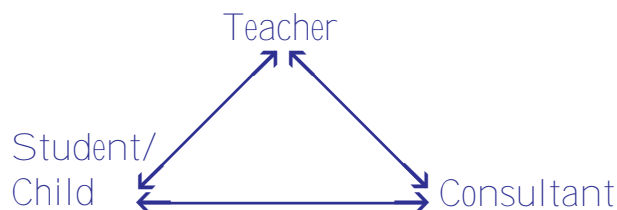
CONSULTATION IN EDUCATIONAL SETTINGS

Why Is Consultation used In Education?

The role of the consultant is to help someone solve a problem. In education, consultation may involve training or coaching school staff to acquire new skills, so that interventions can be integrated throughout the child's day. This Integrated Model of service delivery is supported by professional organizations such as APTA (the American Physical Therapy Association), AOTA (the American Occupational Therapy Association), CEC (Council for Exceptional Children), ASHA (American Speech and Hearing Association) as well as by research from the field.

When is Consultation Appropriate?

Consultation takes place when there is an identified need for help or expertise from a consultant. When the IEP team (including the consultant) agrees that consultation is needed, it is listed as a service on the IEP.



Characteristics of Effective Consultation

- An identified process
- Shared agreement to participate
- Clear focus definition
- Measurable outcomes for the student
- Data-driven decision-making

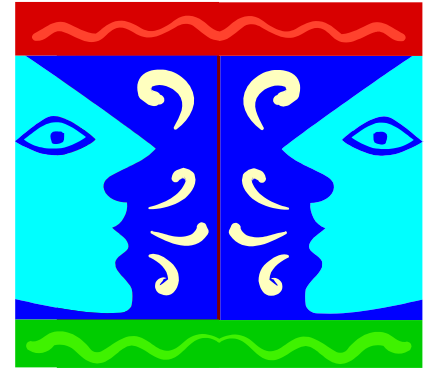
The Consultant's Role in Consultation

- Insures that each stage of the consultation process is observed
- May provide information based upon evaluation of the student
- Suggests options for intervention
- Helps to implement the intervention, as appropriate
- Participates to evaluate the effectiveness of the intervention

The Teacher's Role in Consultation

- Provides information about curriculum goals, instructional style, classroom culture and systems
- Provides information about how the student performs in educational settings
- Participates in the problem-solving process
- Helps to implement the intervention, as appropriate
- Participates to evaluate the effectiveness of the intervention

Consultation



in Educational Settings

Regional and Statewide Services for
Students with Orthopedic Impairments
Douglas ESD
541-440-4791
www.rsoi.org

CONSULTATION IN EDUCATIONAL SETTINGS

What is Consultation in Education?

Consultation in education is a problem-solving process which takes place over a period of time and has a number of stages. During this process, the consultant assists the teacher or other school staff to maximize the student's ability to access and benefit from his or her education program. Any consultation always involves direct evaluation and monitoring of the child.

Educational Consultation is Different...

In educational consultation the consultant and the teacher join together with a focus on the student. It is a collaborative process in which both the teacher and the consultant contribute information about the student. Both contribute to identifying the focus of concern and finding a solution.



SIX STAGES OF CONSULTATION

Consultation is not always sequential, but the process should include six distinct stages to insure its effectiveness:

Stage 1: Initiate the Consultation

The consultant and the teacher take time to agree on a process for interaction, acknowledging that each has expertise to bring to the relationship.

Stage 2: Define the Issue of Concern

The consultant and the teacher identify the focus of the consultation and agree on how it impacts the child's ability to benefit from his or her education. The conversation focuses on observable characteristics of the student and the conditions under which the issue of concern is observed.

Stage 3: Establish Expectations about the Consulting Relationship

The consultant and teacher agree on their roles and those of other team members. The teacher's systems and style preferences are expressed and clarified. Limitations of the consultation are established and agreement is reached on how team members will interrelate.

Stage 4: Collect Information and Identify Desired Outcome

Specific information is gathered about the student, the environment, the tasks or demands on the student and the tools or strategies already in place. The probable cause of the issue of concern is identified. A statement is developed which describes the desired student outcome in measurable terms.

Stage 5: Intervention

A variety of possible interventions are considered. An intervention is selected, and an intervention plan is developed. The intervention takes place.

Stage 6: Evaluate the Intervention and the Consultation

Evaluate the Impact of the Intervention on the Child:

The consultant and the teacher review the student performance data, evaluate the effectiveness of the intervention and either change the intervention or develop strategies to maintain the desired student outcome which has been achieved.

Evaluate the Consultation:

The consultant and the teacher review the goals they set for the consultation, and reach consensus on the effectiveness of the process. A decision is made to either continue the consultation, change the focus of the consultation, or to discontinue it.